

KEL-BES brush plate

for cable pass-through



Brush plates KEL-BES for routing cables into server racks, control panels and electrical enclosures. KEL-BES is also an ideal solution for entry and exit of cables that are routed inside raised floors, e.g. in computer centres.

The brush plates can either be mounted via screws or via [expanding rivets](#).

The KEL-BES plates match exactly the cut-out dimensions 10-, 16- and 24-pin standard industrial connectors.

Specifications

Material	Polyamide Brushes: Polyamide
Flame class	UL94-V0, self-extinguishing
Operating temperature	-20 C° to 90 C°
Properties	silicone free, halogen free
Mounting options	Screw type mounting,Riveting

Advantages & Benefits

- Fast and easy assembly
- Versatile utilisation
- Allows reduced airflow while filtering out dust, hair and larger particulate matter
- Visual screening
- Protects cables against wear due to sharp edges of the cut-out

Product Types & Sizes

KEL-BES 24



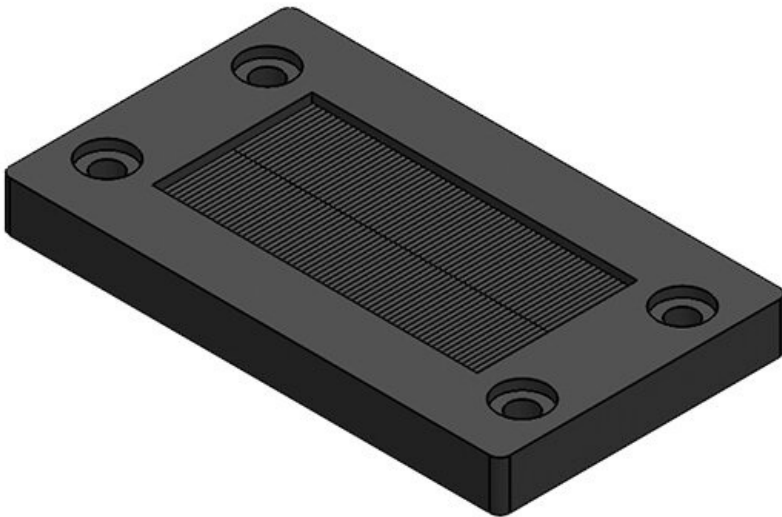
Part No.	51515	Cut-out size	112 × 36 mm
EAN	4251269315	No. of screw	4
	442	holes	
Package	10	Diam. of screw	5,8 mm
quantity		holes	
Length	147 mm		
Width	58 mm		
Height	10 mm		
Mounting	10 mm		
height			

KEL-BES 16



Part No.	51510	Cut-out size	86 × 36 mm
EAN	4251269315435	No. of screw holes	4
Package quantity	10	Diam. of screw holes	5,8 mm
Length	120 mm		
Width	58 mm		
Height	10 mm		
Mounting height	10 mm		

KEL-BES 10



Part No.	51505	Cut-out size	65 × 36 mm
EAN	4251269315428	No. of screw holes	4
Package quantity	10	Diam. of screw holes	5,8 mm
Length	100 mm		
Width	58 mm		
Height	10 mm		
Mounting height	10 mm		