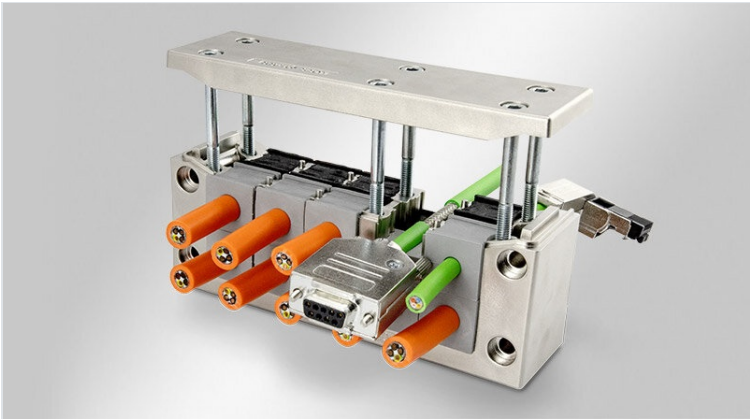


EMC-KEL-DS | Split EMC cable entry frames

for shielding cables with connectors / IP55



IP54

IP55



RoHS
compliant



Made in
Germany

The EMC cable entry frame EMC-KEL-DS has been metallised (galvanise coated) to create a conductive surface.

The front cable grommet (KT) is used for strain relief and cable sealing on the cable jacket. The cable shield is contacted over 360° via the rear conductive grommet (EMC-KT).

The EMC-KEL-DS frames match exactly the cut-out dimensions for 24-pin standard industrial connectors. Either a cut-out of 36 mm or 46 mm in height can be chosen depending on the cables being routed.

The contact between the EMC-KEL-DS and the conductive housing wall is realised via the included conductive flat gasket.

It is also possible to integrate threaded bushings. Please ask us about your desired variant. The version with threaded bushings enables the cable entry frame to be screwed onto the housing from the inside out. This protects against vandalism and tampering with the housing from the outside.

Specifications

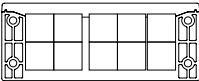
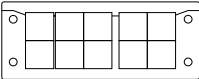
IP rating (EN 60529)	IP54, IP55
Material	Polyamide, highly conductive coating
Flame class	UL94-HB
Operating temperature	-40 C° to 140 C°
Mounting options	Screw type mounting

Advantages & Benefits

- Both conducted and field-bound disturbances can be reliably diverted
- Strain relief and sealing are separated from the EMC contact
- Scratch-resistant surface
- Contacting the cable shield over 360°
- EMC grommets made entirely from conductive elastomer
- Very good dissipation values
- Very good shielding effect with regard to EMC tightness

Product Types & Sizes

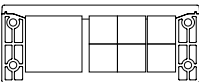
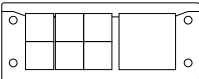
EMC-KEL-DS 24|10



Part No.	99410
EAN	4251269322679
Package quantity	1
For max. no. of cables	10
Max. cable diameter	17 mm
Length	147 mm
Width	58 mm

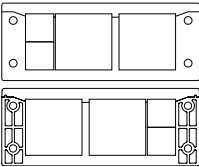
Height	40 mm
Mounting height	40 mm
Cut-out size	112 × 36 mm
No. of screw holes	4
Diam. of screw holes	5,8 mm
Screw material	Stainless steel (V2A)
Suitable for grommets	10 x EMC-KT small 10 x KT small

EMC-KEL-DS 24|7



Part No.	99411
EAN	4251269322686
Package quantity	1
For max. no. of cables	7
Max. cable diameter	35 mm
Length	147 mm
Width	58 mm

Height	40 mm
Mounting height	40 mm
Cut-out size	112 × 36 mm
No. of screw holes	4
Diam. of screw holes	5,8 mm
Screw material	Stainless steel (V2A)
Suitable for grommets	6 x EMC-KT small 1 x EMC-KT large



Part No.	99412	Height	40 mm
EAN	4251269322693	Mounting height	40 mm
Package quantity	1	Cut-out size	112 × 36 mm
For max. no. of cables	4	No. of screw holes	4
Max. cable diameter	35 mm	Diam. of screw holes	5,8 mm
Length	147 mm	Screw material	Stainless steel (V2A)
Width	58 mm	Suitable for grommets	2 x EMC-KT small 2 x EMC-KT large