

EMC-KEL-U | Split EMC cable entry frames

for shielding cables with connectors



The EMC cable entry frames EMC-KEL-U are based on the KEL-U and KEL-E. Due to a conductive surface, disturbances in the cable shields on the control cabinet can be easily dissipated. Field bound disturbances are derived by the metallisation.

The cable entry system is easy to install. Cable grommets are placed into compartments and are securely fixed to the frame during assembly.

The EMC-KEL-U frames match exactly the cut-out dimensions for 16- and 24-pin standard industrial connectors. Either a cut-out of 36 mm or 46 mm in height can be chosen depending on the cables being routed.

The single-row versions EMC-KEL-E are particularly suited for flat connectors. The small frames are ideal for applications with limited space.

Between the EMC-KEL-U and the metal wall a conductive flat gasket (included) is mounted. The flange surface on the metal wall must be free of paint!

Specifications

Material	Polyamide, highly conductive coating
Flame class	UL94-HB
Operating temperature	-40 C° to 140 C°
Properties	vibration proof
Mounting options	Screw type mounting

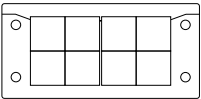
Advantages & benefits

- Both conducted and field-bound disturbances can be reliably diverted
- Scratch-resistant surface
- Contacting the cable shield over 360°
- EMC grommets made entirely from conductive elastomer
- High cable density, wide variety of grommets
- Very good dissipation values
- Very good shielding effect with regard to EMC tightness

Product types & sizes

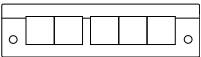
EMC-KEL-U 24 10 	Part No.	99400	Height	17 mm
	EAN	4251269319365	Mounting height	17 mm
	Package quantity	1	Cut-out size	112 x 36 mm
	For max. no. of cables	10	No. of screw holes	4
	Max. cable diameter	17 mm	Diam. of screw holes	5,8 mm
	Length	147 mm	Screw material	Mild steel, galvanically zinc plated
	Width	58 mm	Suitable for grommets	10 x EMC-KT small
EMC-KEL-U 24 4 	Part No.	99401	Height	17 mm
	EAN	4251269319372	Mounting height	17 mm
	Package quantity	1	Cut-out size	112 x 36 mm
	For max. no. of cables	4	No. of screw holes	4
	Max. cable diameter	35 mm	Diam. of screw holes	5,8 mm
	Length	147 mm	Screw material	Mild steel, galvanically zinc plated
	Width	58 mm	Suitable for grommets	2 x EMC-KT small 2 x EMC-KT large

EMC-KEL-U 16|8



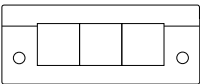
Part No.	99402	Height	17 mm
EAN	4251269319389	Mounting height	17 mm
Package quantity	1	Cut-out size	86 × 36 mm
For max. no. of cables	8	No. of screw holes	4
Max. cable diameter	17 mm	Diam. of screw holes	5,8 mm
Length	120 mm	Screw material	Mild steel, galvanically zinc plated
Width	58 mm	Suitable for grommets	8 x EMC-KT small

EMC-KEL-E5



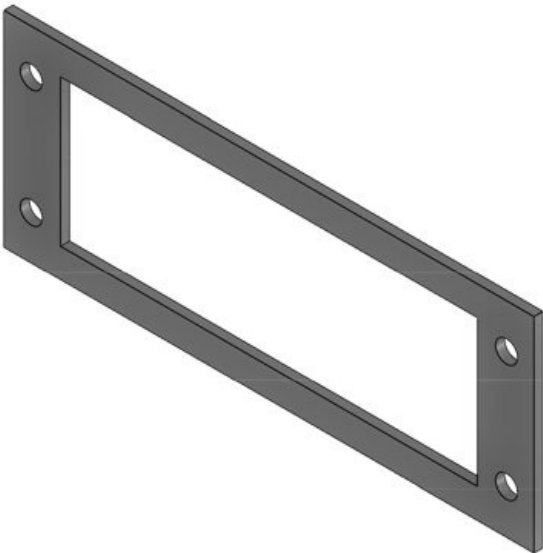
Part No.	99422	Height	17 mm
EAN	4251269319402	Mounting height	17 mm
Package quantity	1	Cut-out size	112 × 24 mm
For max. no. of cables	5	No. of screw holes	2
Max. cable diameter	17 mm	Diam. of screw holes	5,8 mm
Length	147 mm	Screw material	Mild steel, galvanically zinc plated
Width	39 mm	Suitable for grommets	5 x EMC-KT small

EMC-KEL-E3



Part No.	99420	Height	17 mm
EAN	4251269319396	Mounting height	17 mm
Package quantity	1	Cut-out size	65 × 24 mm
For max. no. of cables	3	No. of screw holes	2
Max. cable diameter	17 mm	Diam. of screw holes	5,8 mm
Length	98 mm	Screw material	Mild steel, galvanically zinc plated
Width	39 mm	Suitable for grommets	3 x EMC-KT small

EMC gasket 24



Part No.	98047	Diam. of screw	6 mm
EAN	4251269322655	holes	
Package quantity	1		
Length	145 mm		
Width	56 mm		
Height	2,5 mm		
Mounting height	2,5 mm		

