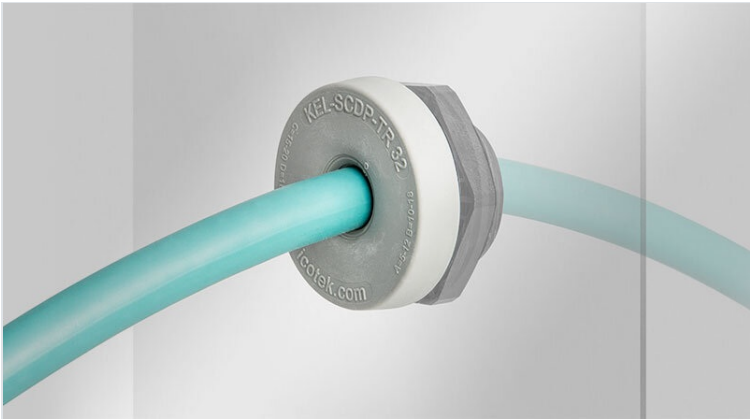


# KEL-SCDP-TR multi-range cable entry grommets

with metric threads M25 - M63, for single cables with diameters up to 52 mm / IP65



IP54

IP55

IP64

IP65

ECOLAB  
certified



RoHS  
compliant

REACH  
COMPLIANCE

Made in  
Germany

With the KEL-SCDP-TR cable entry grommet, single unterminated cables, hoses and conduits can be routed and sealed at a rating of IP65. Its unique advantage is the large sealing range.

The single circular membrane can be peeled away to accommodate the specific diameter of the cable or hose. For this purpose, only a small hole between the rings needs to be pierced. Then the corresponding ring can be removed. The peeled-off area is always round, ensuring a secure seal around cable/hose.

**Peeling of circular membranes:** Cable diameter less 15-25%. The corresponding diameters are marked on the cable entry.

The KEL-SCDP-TR grommets have a thread to fit in metric cut-outs from M25 to M63. Thus cut-outs for metric cable glands can be used. Hexagonal locknuts are included in the delivery.

## Specifications

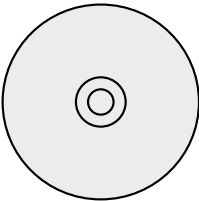
IP rating (EN 60529)	IP54, IP55, IP64, IP65
Material	Elastomer Base frame: Polyamide
Operating temperature	-40 C° to 100 C°
Properties	silicone free, halogen free
Mounting options	Fasten with locknut

## Advantages & benefits

- Perfect edge protection and sealing (IP65)
- Circular membranes can be peeled off easily
- Quick assembly without tools
- Suitable for metric cut-outs
- Hexagonal locknut included in the delivery

## Product types & sizes

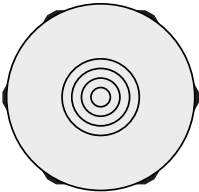
### KEL-SCDP-TR 25



Part No.	44070
EAN	85472000
Package quantity	10
For max. no. of cables	1
Max. cable diameter	17 mm
Height	22 mm
Mounting height	8 mm

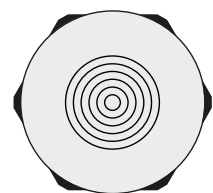
External diameter	39 mm
Cut-out size, round	25,3 mm
Cut-out size, metric	M25
Thread	M25 x 1,5
Thread length	14 mm
Clamping range	1 x 5 - 17 mm

### KEL-SCDP-TR 32



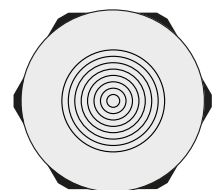
Part No.	44071
EAN	4251269328954
Package quantity	10
For max. no. of cables	1
Max. cable diameter	23 mm
Height	22 mm
Mounting height	8 mm

External diameter	44 mm
Cut-out size, round	32,3 mm
Cut-out size, metric	M32
Thread	M32 x 1,5
Thread length	14 mm
Clamping range	1 x 5 - 23 mm

**KEL-SCDP-TR 40**

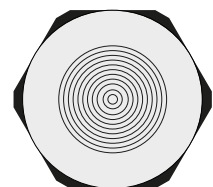
Part No. **44072**  
EAN **4251269328961**  
Package quantity **10**  
For max. no. of cables **1**  
Max. cable diameter **28 mm**  
Height **22 mm**  
Mounting height **8 mm**

External diameter **52 mm**  
Cut-out size, round **40,4 mm**  
Cut-out size, metric **M40**  
Thread **M40 × 1,5**  
Thread length **14 mm**  
Clamping range **1 x 8 - 28 mm**

**KEL-SCDP-TR 50**

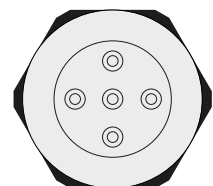
Part No. **44073**  
EAN **4251269328978**  
Package quantity **10**  
For max. no. of cables **1**  
Max. cable diameter **38 mm**  
Height **22 mm**  
Mounting height **8 mm**

External diameter **62 mm**  
Cut-out size, round **50,4 mm**  
Cut-out size, metric **M50**  
Thread **M50 × 1,5**  
Thread length **14 mm**  
Clamping range **1 x 8 - 38 mm**

**KEL-SCDP-TR 63|1**

Part No. **44074**  
EAN **4251269328985**  
Package quantity **10**  
For max. no. of cables **1**  
Max. cable diameter **52 mm**  
Height **22 mm**  
Mounting height **8 mm**

External diameter **75 mm**  
Cut-out size, round **63,4 mm**  
Cut-out size, metric **M63**  
Thread **M63 × 1,5**  
Thread length **14 mm**  
Clamping range **1 x 8 - 52 mm**

**KEL-SCDP-TR 63|5+1**

Part No. **44078**  
EAN **4251269328992**  
Package quantity **10**  
For max. no. of cables **5**  
Max. cable diameter **52 mm**  
Height **22 mm**  
Mounting height **8 mm**

External diameter **75 mm**  
Cut-out size, round **63,4 mm**  
Cut-out size, metric **M63**  
Thread **M63 × 1,5**  
Thread length **14 mm**  
Clamping range **5 x 5 - 13 mm**  
**1 x 50 - 52 mm**